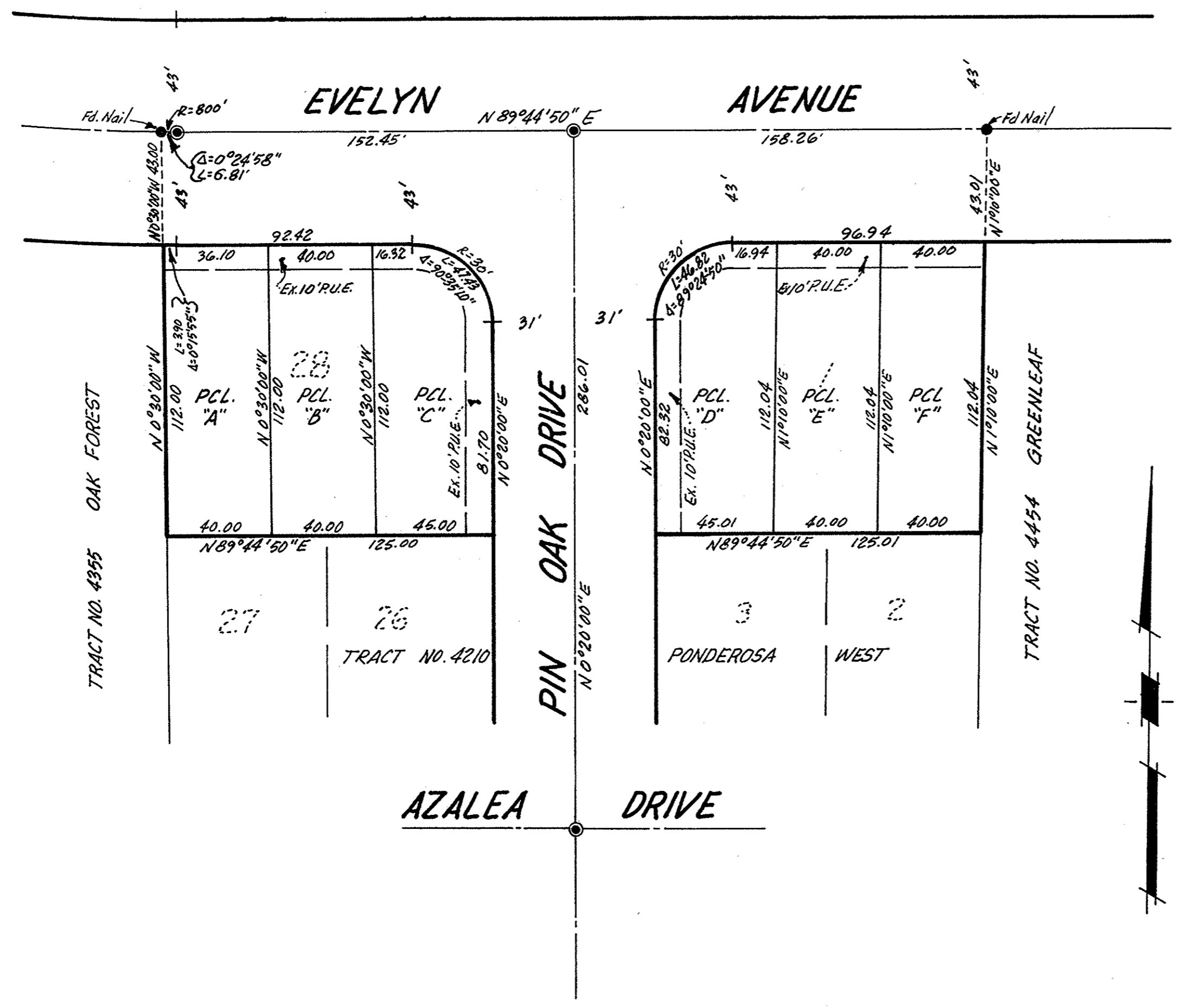


242
44



PARCEL MAP
 BEING LOTS 1 AND 28, TRACT NO. 4210, PONDEROSA WEST
 BOOK 220 MAPS, PAGE 44
SUNNYVALE, CALIFORNIA
 SCALE: 1"=40' AUGUST, 1968
 MARVIN D. KIRKEBY—CIVIL ENGINEER

SURVEYOR'S CERTIFICATE

This map was prepared by me or under my direction and is based upon record data in conformance with the requirements of the Subdivision Map Act of the request of Bahl Homes in August, 1968. I hereby certify that it conforms to the approved tentative map and the conditions of approval thereof; that all provisions of applicable state law and local ordinances have been complied with.

Marvin D. Kirkeby
 MARVIN D. KIRKEBY
 R.C.E. No. 14001

CITY ENGINEER'S CERTIFICATE

This map has been examined this 11 day of Sept., 1968 for conformance with the requirements of Section 11575 of the Subdivision Map Act.

DONALD M. SOMERS, CITY ENGINEER
Donald M. Somers

3487488
RECORDER'S CERTIFICATE

Filed for record this 20th day of September, 1968, at 2:35 P.M. in Book 242 of Maps at page 44 at the request of Marvin D. Kirkeby.
 Fee \$5.00

GEORGE E. FOWLES, COUNTY RECORDER
 By: *B. J. Santamor*
 Deputy

BASIS OF BEARINGS AND NOTES

The bearing (N 89°44'50" E) of the centerline of Evelyn Avenue as shown on the map of Tract No. 4210, Ponderosa West recorded in Book 220 of Maps at page 44, Santa Clara County Records was used as the basis of bearings shown on this map.
 ○ Indicates iron pipe set, unless otherwise noted.
 ● Indicates iron pipe found, unless otherwise noted.
 ⊙ Indicates standard city monument found.
 All distances and dimensions are in feet and decimals thereof.
 (P.U.E.) = Public Utility Easement

242
44